

4179

BRIDGEVIEW II HORIZONTAL PROPERTY REGIME


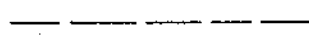

GREENVILLE CO., S. C.

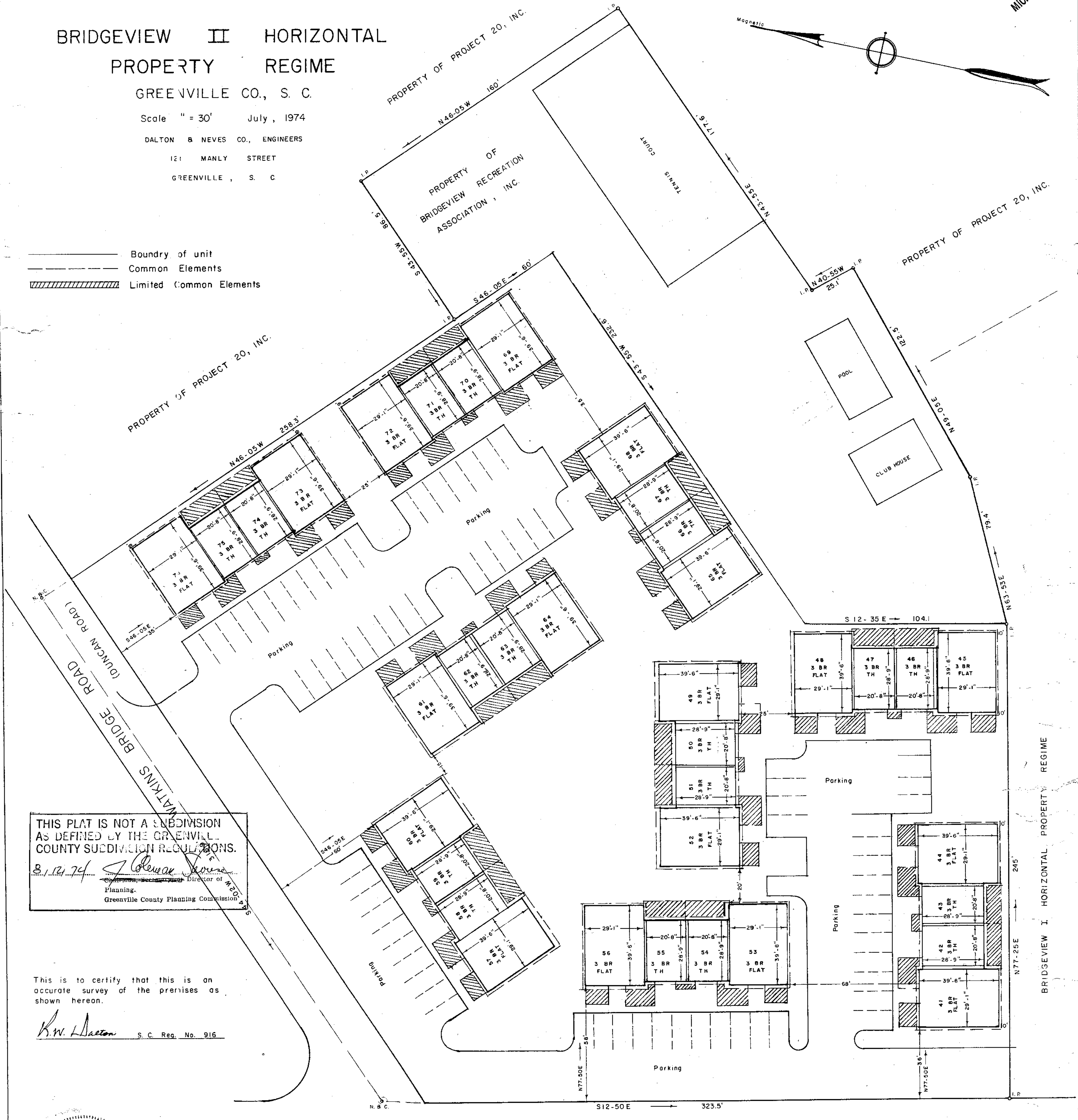
Scale " = 30' July, 1974

DALTON & NEVES CO., ENGINEERS

121 MANLY STREET

GREENVILLE, S. C.

-  Boundry of unit
-  Common Elements
-  Limited Common Elements



THIS PLAT IS NOT A SUBDIVISION
AS DEFINED BY THE GREENVILLE
COUNTY SUBDIVISION REGULATIONS.
8/1/74 *J. Coleman Jones*
Director of
Planning,
Greenville County Planning Commission

This is to certify that this is an
accurate survey of the premises as
shown hereon.
R.W. Dalton S. C. Reg. No. 916



15F-69

AUG 12 1974

FILED
GREENVILLE CO., S. C.
AUG 12 11 39 AM '74
DONNIE S. TANKERSLEY
R.M.C.

HUNTS BRIDGE ROAD

MICROFILMED